

Style Sheet for New Parts

Additional help files in this series:

- Style Sheet for Full Score
- Style Sheet for Replacement Parts

**We adhere to
principles outlined in the booklet**

[Standard Music Notation Practice](#)

**available from Music Publishers' Association
and
Music Educators National Conference**

in addition to the Style Sheets for

BandMusic PDF Library

There's a Long, Long Trail

Zo Elliott
arr. T. M. Taylor
ed. by Meri Schoof

Title: Times New Roman, 24pt, bold

Instrument/Composer:
Times New Roman, 14pt bold

Credit Arranger and Editor!
arr: _____
ed. by: Your Name
Times N.R. 14 pt, Bold

Trumpet 1



First Staff Indent = 0.5 in.

Header for pages 2, 3, etc.:

- Title
- Instrument Part
- Page Number

TIP: If the original fit on 1 page,
make the new part 1 page.



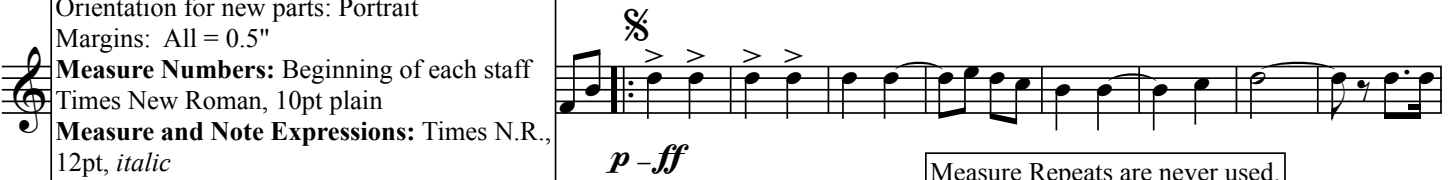
Question: Does Finale or Sibleus give the perfect layout
for instrument parts? No! Almost always it takes some
tweaking by hand.

Orientation for new parts: Portrait
Margins: All = 0.5"

Measure Numbers: Beginning of each staff
Times New Roman, 10pt plain

Measure and Note Expressions: Times N.R.,
12pt, *italic*

Page Reduction: 85% (*or as needed*)



Measure Repeats are never used.
Print out each measure instead.
Mosly found in F Horn parts.



Follow notation conventions in:
Standard Music Notation Practice
Download from www.mpa.org/

Always: Space the staves evenly to fill all pages.
Never: Never use a fraction of a page.



License centered on bottom margin - Music donated to BMPDF only.
This is in place of a copyright notice.
• Go here to find out more -
<http://creativecommons.org/license/>
• Go here for copy and paste license -
http://creativecommons.org/license/non-web-popup?license_code=by

